



Zicom Group
Of Companies

FOUNDATION ASSOCIATES ENGINEERING PTE LTD

5, Tuas Avenue 1, Singapore 639490
Tel: (65) 6863-1633 Fax: (65) 6863-1455
E-mail: fnapl@singnet.com.sg Website: www.fnapl.com

CALL US FOR YOUR LOCAL AGENT

*Technical Specifications are subjected to change without prior notice due to continuous development.



SALES • RENTAL • PARTS • SERVICE



FOUNDATION ASSOCIATES ENGINEERING PTE LTD

Foundation Associates Engineering (FAE) began in 1998 continuing a tradition of innovation. Today, we continue to be one of the leaders in the Asian market for our range of FAV Vibratory Drivers/ Extractors coupled with our line of more powerful and reliable Hydraulic Powerpacks. Our in-house brand FAV and its logo is a trademark of assurance and confidence that is well recognized in the local and ASEAN construction industry. Each of our FAV Vibratory Driver/Extractor and Powerpack provides an impressive driving and extracting capability.

In recent years, we have enhanced our capability of building our own hydraulic powerpacks to meet the current challenging condition of construction sites and to meet the needs of our customers. The combined configuration offers contractors significant cost advantages with the ability to meet a diversity of requirements utilizing one hammer with multiple energy ratings.

FAE's success continues with a tradition of commitment to manufacturing and marketing the very best pile driving equipment. Simplicity of design, reliability of performance and durability for long service life continue to be core principles of our business. These values resonate with our key partners, contractors and engineering firms worldwide.

Every FAE's equipment seen today has been the result of working closely with the customers and understanding their needs. For decades, FAE has evolved through inventing, perfecting tools and equipment to meet customers' requirement for advance solution to highly challenging projects.

FAE's attention to customer service continues to perfect it's line of equipment and interchangeable components. The goal is to enable our customers to accomplish more at lower cost with their investment in FAE's equipment.



VIBRATORY HAMMERS



Zicom Group
Of Companies

Our new Hydraulic Vibratory Hammers are coupled with our FAV Hydraulic Powerpacks that are produced with innovations and improvements in mind for the benefit of end users.

These features are model dependant and subject to continuous improvements.

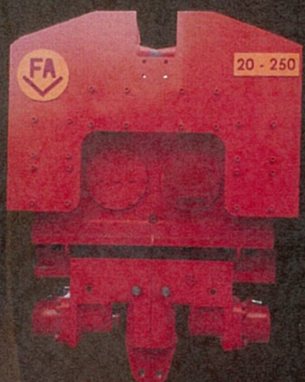
- **Rexroth Hydraulic Pumps and Solenoids**
All powerpacks are fitted with **Rexroth hydraulic pumps and Solenoids** as standard production.
- **Parts commonality**
All parts including hydraulic pumps and motors are easily available in the market.
- **"Self-cool" Feature**
Self-cooling feature upon activating the "Self-Cool" button.
- **Digital Pressure Reading at Remote Control Pendant**
Digital pressure reading at remote control pendant for easy observation during operation.
- **Oversized coolers**
To cater for hot climatic and difficult working conditions.
- **Environmental Friendly**
Noise reduction structural frames and panels for sound proofing effects.
- **Stackable Frame**
Concealed exhaust silencer and container blocks at 8 corners enable stacking of powerpacks. Container blocks also double up as lifting eyes.
- **Hydraulic Tank with Internal Sediment Tank**
Segregated internal sediments tank for filtering of foreign particles in the hydraulic tank.
- **External Fuel Tank and Hydraulic Tank Inspection Allocations**
Allocations for external inspections are incorporated at fuel and hydraulic tank for ease of maintenance.
- **Stainless steel latches and hinges**
Stainless steel panels latches and hinges for long lasting and weather resistant.

**All technical data are indicative and subject to change without notice.*



VIBRATORY HAMMERS

FAV 20-250 HYDRAULIC VIBRATORY HAMMER



SPECIFICATIONS	FAV 20-250
Eccentric Moment	16 kgm
Frequency	1,800 vpm
Centrifugal Force	570kN
Amplitude (Free Hanging w/o clamp)	20 mm
Maximum Line Pull for extracting	300 kN
Total weight (w/o clamp & hose)	2,560kg
Non-Vibrating Weight	960 kg
Height (w/o clamp)	1,420 mm
Length (include Hose Chute)	1,650 mm
Width	623 mm
Throat width	623 mm
Hydraulic hose length	30 mtr.
Hydraulic hose weight (w/o oil)	385 kg

FAV 370 HYDRAULIC POWERPACK



FAV 370PP

Engine: John Deere 6081
 Max. Drive Flow: 390 litres / min
 Max. Drive Pressure: 340 bar
 Power: 370 HP
 Operating Speed: 1,900 rpm

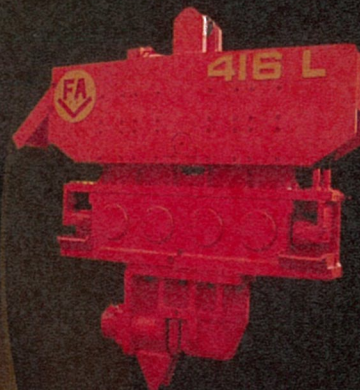
- Conceal exhaust silencer and 4 lifting eyes
- Stainless steel latches
- Noise reduction panels
- External fuel & hydraulic tank inspection allocations
- 3,170 mm (L) x 1,495 mm (B) x 2,175 mm (H)
- 4 Tons (approx.)

**All technical data are indicative and subject to change without notice.*



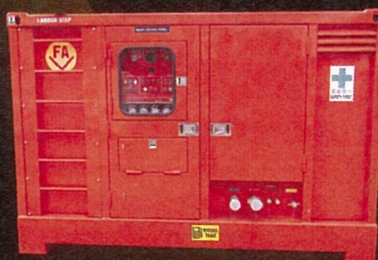
VIBRATORY HAMMERS

FAV 416L HYDRAULIC VIBRATORY HAMMER



SPECIFICATIONS	FAV 416L
Eccentric Moment	26 kgm
Frequency	1,800vpm
Centrifugal Force	927kN
Amplitude (Free Hanging w/o clamp)	25 mm
Maximum Line Pull for extracting	355 kN
Total weight (w/o clamp & hose)	3,360 kg
Non-Vibrating Weight	1,315 kg
Height (w/o clamp)	1,820 mm
Length (include Hose Chute)	2,830 mm
Width	430 mm
Throat width	355 mm
Hydraulic hose length	30 mtr.
Hydraulic hose weight (w/o oil)	385 kg

FAV 370 HYDRAULIC POWERPACK



FAV 370PP

Engine: John Deere 6081
 Max. Drive Flow: 390 litres / min
 Max. Drive Pressure: 340 bar
 Power: 370 HP
 Operating Speed: 1,900 rpm

- Conceal exhaust silencer and 4 lifting eyes
- Stainless steel latches
- Noise reduction panels
- External fuel & hydraulic tank inspection allocations
- 3,170 mm (L) x 1,495 mm (B) x 2,175 mm (H)
- 4 Tons (approx.)

**All technical data are indicative and subject to change without notice.*



VIBRATORY HAMMERS

FAV 418-S HYDRAULIC VIBRATORY HAMMER



SPECIFICATIONS	FAV 418-S
Eccentric Moment	28 kgm
Frequency	1,800vpm
Centrifugal Force	998kN
Amplitude (Free Hanging w/o clamp)	24 mm
Maximum Line Pull for extracting	355 kN
Total weight (w/o clamp & hose)	3,980 kg
Non-Vibrating Weight	1,160 kg
Height (w/o clamp)	1,907 mm
Length (exclude Hose Chute)	2,460 mm
Width	567 mm
Throat width	325 mm
Hydraulic hose length	30 mtr.
Hydraulic hose weight (w/o oil)	385 kg

FAV 370 HYDRAULIC POWERPACK



FAV 370PP

Engine: John Deere 6081
 Max. Drive Flow: 390 litres / min
 Max. Drive Pressure: 340 bar
 Power: 370 HP
 Operating Speed: 1,900 rpm

- Conceal exhaust silencer and 4 lifting eyes
- Stainless steel latches
- Noise reduction panels
- External fuel & hydraulic tank inspection allocations
- 3,170 mm (L) x 1,495 mm (B) x 2,175 mm (H)
- 4 Tons (approx.)

**All technical data are indicative and subject to change without notice.*



VIBRATORY HAMMERS

FAV 30-400 HYDRAULIC VIBRATORY HAMMER



SPECIFICATIONS	FAV 30-400
Eccentric Moment	30 kgm
Frequency	1,800 vpm
Centrifugal Force	1,069 kN
Amplitude (Free Hanging w/o clamp)	22 mm
Maximum Line Pull for extracting	400 kN
Total weight (w/o clamp & hose)	4,300kg
Non-Vibrating Weight	1,534 kg
Height (w/o clamp)	2,010 mm
Length (include Hose Chute)	2,550 mm
Width	330 mm
Throat width	320 mm
Hydraulic hose length	30 mtr.
Hydraulic hose weight (w/o oil)	385 kg

FAV 400 HYDRAULIC POWERPACK



FAV 400PP

Engine: John Deere 6135
 Max. Drive Flow: 435 litres / min
 Max. Drive Pressure: 340 bar
 Power: 400 HP
 Operating Speed: 2,100 rpm

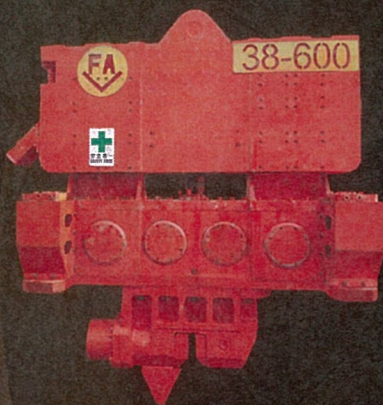
- Conceal exhaust silencer and 4 lifting eyes
- Stainless steel latches & hinges
- Noise reduction panels
- External fuel & hydraulic tank inspection allocations
- 3,770 mm (L) x 1,650 mm (B) x 2,230 mm (H)
- 5 Tons (approx.)

**All technical data are indicative and subject to change without notice.*



VIBRATORY HAMMERS

FAV 38-600 HYDRAULIC VIBRATORY HAMMER



SPECIFICATIONS	FAV 38-600
Eccentric Moment	30 kgm
Frequency	1,800 vpm
Centrifugal Force	1,354 kN
Amplitude (Free Hanging w/o clamp)	30 mm
Maximum Line Pull for extracting	710 kN
Total weight (w/o clamp & hose)	6,500 kg
Non-Vibrating Weight	1,815 kg
Height (w/o clamp)	2,150 mm
Length (include Hose Chute)	3,000 mm
Width	750 mm
Throat width	330 mm
Hydraulic hose length	45 mtr.
Hydraulic hose weight (w/o oil)	770 kg

FAV 600 HYDRAULIC POWERPACK



FAV 600PP

Engine: John Deere 6135
 Max. Drive Flow: 630 litres / min
 Max. Drive Pressure: 340 bar
 Power: 600 HP
 Operating Speed: 2,100 rpm

- Conceal exhaust silencer and 4 lifting eyes
- Stainless steel latches & hinges
- Noise reduction panels
- External fuel & hydraulic tank inspection allocations
- 3,850 mm (L) x 1,650 mm (B) x 2,270 mm (H)
- 7 Tons (approx.)

*All technical data are indicative and subject to change without notice.



VIBRATORY HAMMERS

FAV 44-2000 HYDRAULIC VIBRATORY HAMMER



SPECIFICATIONS	FAV 44-2000
Eccentric Moment	51 kgm
Frequency	2,000 vpm
Centrifugal Force	2,244 kN
Amplitude (Free Hanging w/o clamp)	26 mm
Maximum Line Pull for extracting	710 kN
Total weight (w/o clamp & hose)	5,650 kg
Non-Vibrating Weight	1,658 kg
Height (w/o clamp)	1,830 mm
Length (include Hose Chute)	2,430 mm
Width	560 mm
Throat width	380 mm
Hydraulic hose length	45 mtr.
Hydraulic hose weight (w/o oil)	770 kg

FAV 600 HYDRAULIC POWERPACK



FAV 600PP

Engine: John Deere 6135
 Max. Drive Flow: 630 litres / min
 Max. Drive Pressure: 340 bar
 Power: 600 HP
 Operating Speed: 2,100 rpm

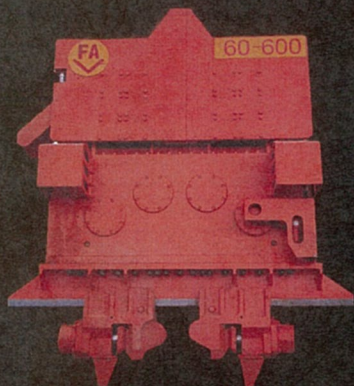
- Conceal exhaust silencer and 4 lifting eyes
- Stainless steel latches & hinges
- Noise reduction panels
- External fuel & hydraulic tank inspection allocations
- 3,850 mm (L) x 1,650 mm (B) x 2,270 mm (H)
- 7 Tons (approx.)

*All technical data are indicative and subject to change without notice.



VIBRATORY HAMMERS

FAV 60-600 HYDRAULIC VIBRATORY HAMMER



SPECIFICATIONS	FAV 60-600
Eccentric Moment	60 kgm
Frequency	1,800 vpm
Centrifugal Force	2,138 kN
Amplitude (Free Hanging w/o clamp)	23 mm
Maximum Line Pull for extracting	700 kN
Total weight (w/o clamp & hose)	6,872 kg
Non-Vibrating Weight	1,725 kg
Height (w/o clamp)	2,330 mm
Length (exclude Hose Chute)	2,552 mm
Width	872 mm
Throat width	350 mm
Hydraulic hose length	45 mtr.
Hydraulic hose weight (w/o oil)	1,020 kg

FAV 600 HYDRAULIC POWERPACK



FAV 600PP

Engine: John Deere 6135
 Max. Drive Flow: 630 litres / min
 Max. Drive Pressure: 340 bar
 Power: 600 HP
 Operating Speed: 2,100 rpm

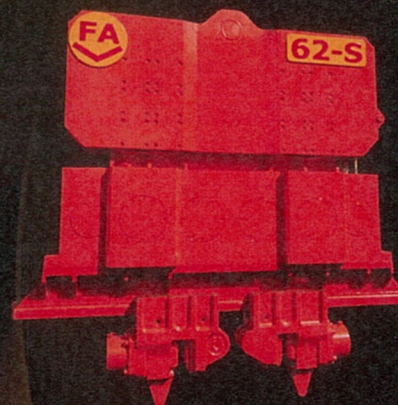
- Conceal exhaust silencer and 4 lifting eyes
- Stainless steel latches & hinges
- Noise reduction panels
- External fuel & hydraulic tank inspection allocations
- 3,850 mm (L) x 1,650 mm (B) x 2,270 mm (H)
- 7 Tons (approx.)

**All technical data are indicative and subject to change without notice.*



VIBRATORY HAMMERS

FAV 62-S HYDRAULIC VIBRATORY HAMMER



SPECIFICATIONS	FAV 62-S
Eccentric Moment	62 kgm
Frequency	1,800 vpm
Centrifugal Force	2,210 kN
Amplitude (Free Hanging w/o clamp)	24 mm
Maximum Line Pull for extracting	710 kN
Total weight (w/o clamp & hose)	7,550 kg
Non-Vibrating Weight	2,280 kg
Height (w/o clamp)	2,160 mm
Length (include Hose Chute)	3,160 mm
Width	760 mm
Throat width	330mm
Hydraulic hose length	45 mtr.
Hydraulic hose weight (w/o oil)	1,020 kg

FAV 600 HYDRAULIC POWERPACK



FAV 600PP

Engine: John Deere 6135
 Max. Drive Flow: 630 litres / min
 Max. Drive Pressure: 340 bar
 Power: 600 HP
 Operating Speed: 2,100 rpm

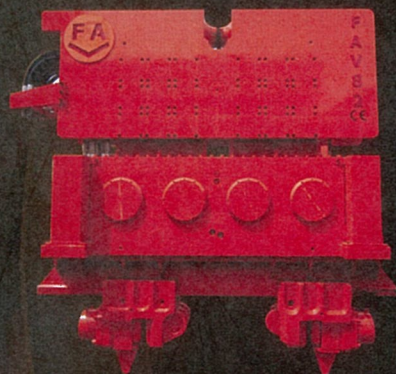
- Conceal exhaust silencer and 4 lifting eyes
- Stainless steel latches & hinges
- Noise reduction panels
- External fuel & hydraulic tank inspection allocations
- 3,850 mm (L) x 1,650 mm (B) x 2,270 mm (H)
- 7 Tons (approx.)

**All technical data are indicative and subject to change without notice.*



VIBRATORY HAMMERS

FAV 82 HYDRAULIC VIBRATORY HAMMER



SPECIFICATIONS	FAV 82
Eccentric Moment	82 kgm
Frequency	1,600 vpm
Centrifugal Force	2,320 kN
Amplitude (Free Hanging w/o clamp)	22 mm
Maximum Line Pull for extracting	1,060 kN
Total weight (w/o clamp & hose)	10,700 kg
Non-Vibrating Weight	7,530 kg
Height (w/o clamp)	2,200 mm
Length (include Hose Chute)	3,315 mm
Width	761 mm
Throat width	461 mm
Hydraulic hose length	45 mtr.
Hydraulic hose weight (w/o oil)	1,000 kg

FAV 900 HYDRAULIC POWERPACK



FAV 900PP

Engine: Caterpillar C18 ACERT
 Max. Drive Flow: 900 litres / min
 Max. Drive Pressure: 340 bar
 Power: 765 HP
 Operating Speed: 2,100 rpm

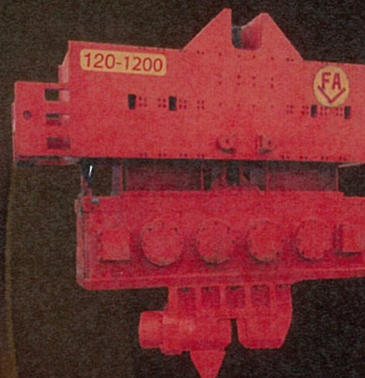
- Conceal exhaust silencer and 4 lifting eyes
- Stainless steel latches & hinges
- Noise reduction panels
- External fuel & hydraulic tank inspection allocations
- 4,800 mm (L) x 2,150 mm (B) x 2,540 mm (H)
- 10 Tons (approx.)

**All technical data are indicative and subject to change without notice.*



VIBRATORY HAMMERS

FAV 120-1200 HYDRAULIC VIBRATORY HAMMER



SPECIFICATIONS	FAV 120-1200
Eccentric Moment	120 kgm
Frequency	1,600 vpm
Centrifugal Force	3,379 kN
Amplitude (Free Hanging w/o clamp)	32 mm
Maximum Line Pull for extracting	1,600 kN
Total weight (w/o clamp & hose)	13,776 kg
Non-Vibrating Weight	6,277kg
Height (w/o clamp)	2,560 mm
Length (include Hose Chute)	3,580 mm
Width	1,002 mm
Throat width	817.4 mm
Hydraulic hose length	45 mtr.
Hydraulic hose weight (w/o oil)	1,020 kg

FAV 1200 HYDRAULIC POWERPACK



FAV 1200PP

Engine: Caterpillar C27 ACERT
 Max. Drive Flow: 1,280 litres / min
 Max. Drive Pressure: 340 bar
 Power: 1,050 HP
 Operating Speed: 2,000 rpm

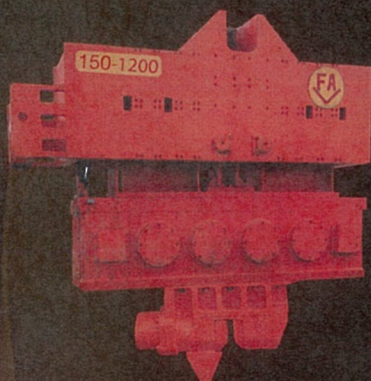
- Conceal exhaust silencer and 4 lifting eyes
- Stainless steel latches & hinges
- Noise reduction panels
- External fuel & hydraulic tank inspection allocations
- 4,470 mm (L) x 2,230 mm (B) x 2,560 mm (H)
- 12.8 Tons (approx.)

**All technical data are indicative and subject to change without notice.*



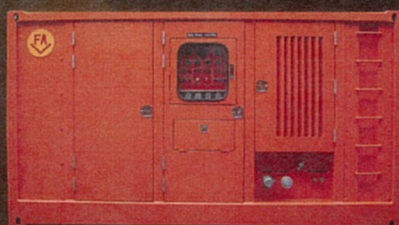
VIBRATORY HAMMERS

FAV 150-1200 HYDRAULIC VIBRATORY HAMMER



SPECIFICATIONS	FAV 150-1200
Eccentric Moment	150 kgm
Frequency	1,400 vpm
Centrifugal Force	3,234 kN
Amplitude (Free Hanging w/o clamp)	41 mm
Maximum Line Pull for extracting	2,082 kN
Total weight (w/o clamp & hose)	16,500 kg
Non-Vibrating Weight	9,200 kg
Height (w/o clamp)	2,650 mm
Length (include Hose Chute)	3,050 mm
Width	660 mm
Throat width	660 mm
Hydraulic hose length	45 mtr.
Hydraulic hose weight (w/o oil)	1,020 kg

FAV 1200 HYDRAULIC POWERPACK



FAV 1200PP

Engine: Caterpillar C27 ACERT
 Max. Drive Flow: 1,280 litres / min
 Max. Drive Pressure: 340 bar
 Power: 1,050 HP
 Operating Speed: 2,000 rpm

- Conceal exhaust silencer and 4 lifting eyes
- Stainless steel latches & hinges
- Noise reduction panels
- External fuel & hydraulic tank inspection allocations
- 4,470 mm (L) x 2,230 mm (B) x 2,560 mm (H)
- 12.8 Tons (approx.)

*All technical data are indicative and subject to change without notice.



VIBRATORY HAMMERS

FAV 250-1200 HYDRAULIC VIBRATORY HAMMER



SPECIFICATIONS	FAV 250-1200
Eccentric Moment	250 kgm
Frequency	1,400 vpm
Centrifugal Force	5,390 kN
Amplitude (Free Hanging w/o clamp)	45 mm
Maximum Line Pull for extracting	3,123 kN
Total weight (w/o clamp & hose)	22,500 kg
Non-Vibrating Weight	11,500 kg
Height (w/o clamp)	2,650 mm
Length (include Hose Chute)	4,600 mm
Width	900 mm
Throat width	900 mm
Hydraulic hose length	45 mtr.
Hydraulic hose weight (w/o oil)	1,020 kg

FAV 1200 HYDRAULIC POWERPACK



FAV 1200PP

Engine: Caterpillar C27 ACERT
 Max. Drive Flow: 1,280 litres / min
 Max. Drive Pressure: 340 bar
 Power: 1,050 HP
 Operating Speed: 2,000 rpm

- Conceal exhaust silencer and 4 lifting eyes
- Stainless steel latches & hinges
- Noise reduction panels
- External fuel & hydraulic tank inspection allocations
- 4,470 mm (L) x 2,230 mm (B) x 2,560 mm (H)
- 12.8 Tons (approx.)

*All technical data are indicative and subject to change without notice.



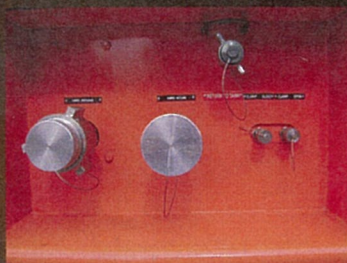
VIBRATORY HAMMERS

CONTROL PANEL



Control Panel

- Drive, open/close clamp, stop pressure gauge
- Temperature gauge for water, oil pressure gauge
- Tachometer, battery charging indicator
- Hydraulic low level, temperature cut off indicators
- Manual/remote control selector switch
- Main power on/off switch



Hose Connection

- Drive pressure quick coupling
- Return pressure quick coupling
- Drain return
- Open clamp hose
- Close clamp hose



Wire Control Pendant

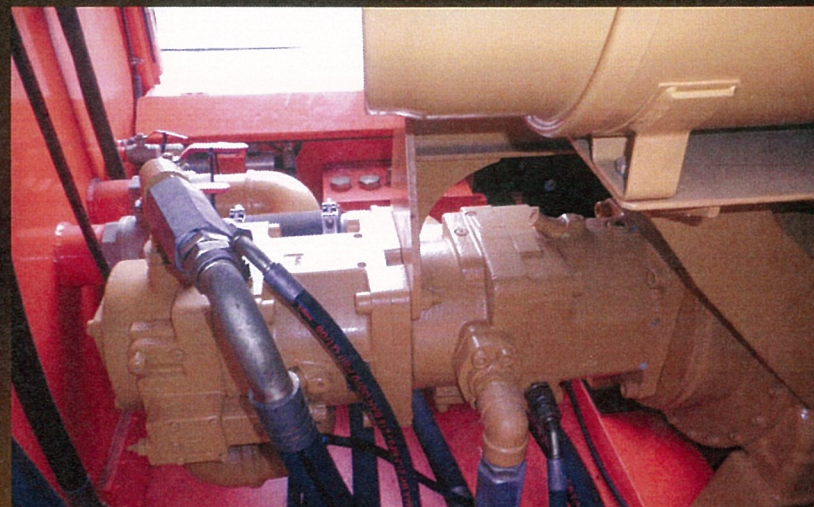
- 10m wire control pendant
- Digital pressure read-out
- Safety emergency stop button

**All technical data are indicative and subject to change without notice.*



VIBRATORY HAMMERS

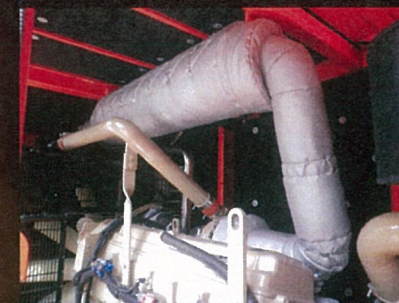
REXROTH PUMP



REXROTH CONTROL VALVE



INSULATED EXHAUST



**All technical data are indicative and subject to change without notice.*



VIBRATORY HAMMERS

RF ZERO SERIES

FAV RF ZERO SERIES Resonance Free Hydraulic Vibratory Hammers

FAV RF Zero Series Hydraulic Vibratory Hammers eliminates the start-up and shut-down vibrations by utilizing a mechanism which enables control over the vibrations.

The vibrations of the FAV RF Zero Series Hydraulic Vibratory Hammers can be switch on and off easily.

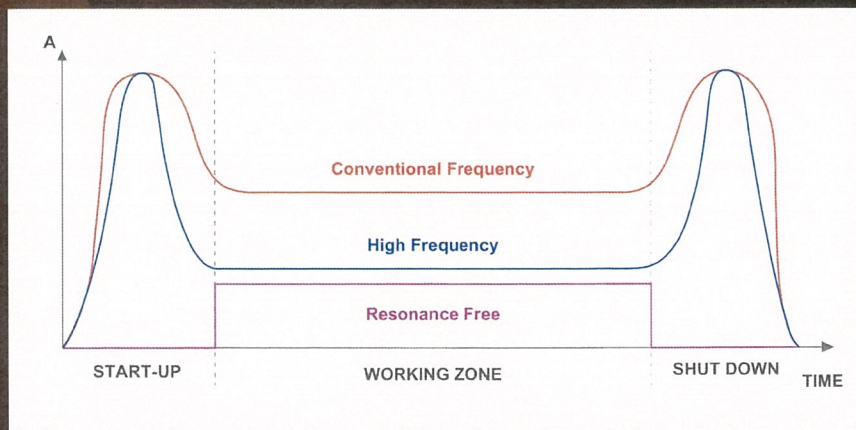
When the vibrator is starting up, the effect of eccentric moment is switched off and no vibrations are generated.

Once the vibrator has reached it's operating frequency, the effect of eccentric moment is switched on and vibration immediately commences at this frequency.

Similarly, during shutdown, the effect of eccentric moment is switched off before the vibrator slows down.

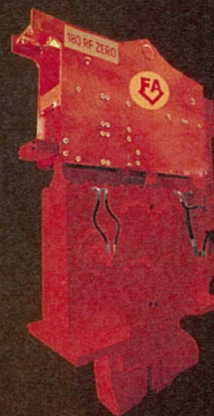
This avoids transmitting resonance vibrations to the crane jib and surrounding environment. In addition, the amplitude can be adjusted to reach the maximum permitted level in sensitive areas. Therefore, FAV RF Zero Series Hydraulic Vibratory Hammers produce significantly less stress to the carrier's boom.

- High frequency produces less ground vibrations.
- No harmful low frequency vibrations during starting and stopping.
- Operators can work much closer to buildings, utility lines, and other vulnerable spaces compared to conventional vibratory hammers.
- Adjustment of driving speed.



VIBRATORY HAMMERS

FAV 180 RF ZERO HYDRAULIC VIBRATORY HAMMER



SPECIFICATIONS	FAV 180 RF ZERO
Eccentric Moment	0-18 kgm
Frequency	0-2,300 vpm
Centrifugal Force	1,047 kN
Amplitude (Free Hanging w/o clamp)	11 mm
Maximum Line Pull for extracting	470kN
Total weight (w/o clamp & hose)	4,280 kg
Dynamic weight (w/o clamp)	3,145 kg
Length L	1,994 mm
Width W	424 mm
Height H	2,314 mm

FAV 428 POWERPACK - Z



FAV 428-Z PP

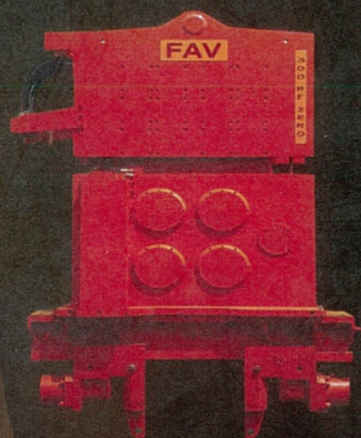
Engine : VOLVO PENTA TAD 1372VE
 Max. Oil Flow : 550 litres / min
 Max Pressure : 350 bar
 Diesel Tank Capacity : 820 litres
 Hydraulic Oil Tank Capacity : 1,350 litres
 Power : 428 HP
 Hydraulic Pump : Rexroth (Open Loop System)
 - Gearbox Cooling installed
 - 4,200 mm (L) x 1,790 mm (B) x 2,135 mm (H)
 - 4.68 Tons (approx.)

*All technical data are indicative and subject to change without notice.



VIBRATORY HAMMERS

FAV 300 RF ZERO



SPECIFICATIONS	FAV 300 RF ZERO
Eccentric Moment	0-30 kgm
Frequency	0-2,300vpm
Centrifugal Force	1,746kN
Amplitude (Free Hanging w/o clamp)	15 mm
Maximum Line Pull for extracting	700kN
Total weight (w/o clamp & hose)	5,720 kg
Non-vibrating weight	1,330 kg
Dynamic weight (w/o clamp)	4,390 mm
Height	2,520 mm
Length (include Hose Chute)	1,850 mm
Throat Width	410 mm
Hydraulic hose length	30 mtr.

FAV 700 POWERPACK - Z



FAV 700-Z PP

Engine : VOLVO TAD 1672 VE
 Engine Speed : 1,900rpm
 Max. Oil Flow : 988 litres / min
 Max Pressure : 350 bar
 Diesel tank Capacity : 830 litres
 Hydraulic Oil Tank Capacity : 1,600 litres
 Power: 700 HP

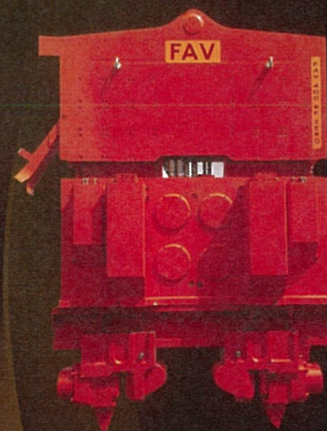
- Conceal exhaust silencer and 4 lifting eyes
- Stainless steel latches & hinges
- Noise reduction panels
- External fuel & hydraulic tank inspection allocations
- 4,530 mm (L) x 2,020 mm (B) x 2,150 mm (H)
- 7.7 Tons (approx.)

*All technical data are indicative and subject to change without notice.



VIBRATORY HAMMERS

FAV 400 RF ZERO



SPECIFICATIONS	FAV 400 RF ZERO
Eccentric Moment	0-40 kgm
Frequency	0-2,300vpm
Centrifugal Force	2,328kN
Amplitude (Free Hanging w/o clamp)	18 mm
Maximum Line Pull for extracting	940kN
Total weight (w/o clamp & hose)	8,000 kg
Non-vibrating weight	2,050 kg
Dynamic weight (w/o clamp)	5,950 mm
Height	2,640mm
Length (include Hose Chute)	2,395 mm
Throat width	415 mm
Hydraulic hose length	40 mtr.

FAV 800 POWERPACK - Z



FAV 800-Z PP

Engine : VOLVO TAD 1543 VE
 Engine Speed : 1,900rpm
 Max. Oil Flow : 988 litres / min
 Max Pressure : 350 bar
 Diesel tank capacity : 890 litres
 Hydraulic oil tank capacity : 1,800 litres
 Power: 768 HP

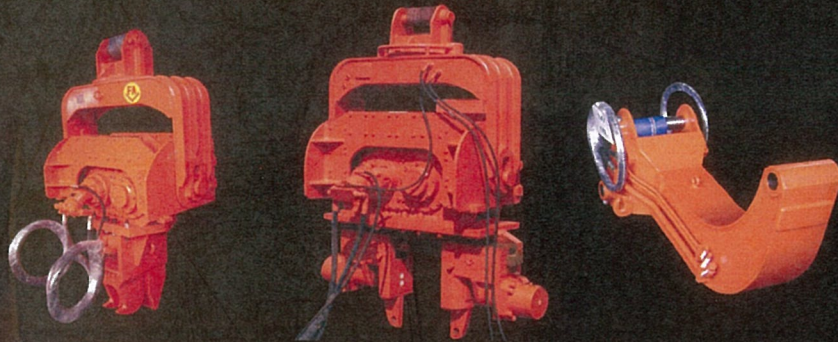
- Conceal exhaust silencer and 4 lifting eyes
- Stainless steel latches & hinges
- Noise reduction panels
- External fuel & hydraulic tank inspection allocations
- 4,730 mm (L) x 2,020 mm (B) x 2,150 mm (H)
- 7.75 Tons (approx.)

*All technical data are indicative and subject to change without notice.



VIBRATORY HAMMERS

FAV EXCAVATOR MOUNTED HYDRAULIC VIBRATORY HAMMER (Self-Pick Type)



The Hydraulic Vibratory Hammer installed on the Excavator is widely used to drive and extract piles. The advantages of FAV Excavator Mounted Vibratory Hammer are: It's small size which improves the workability in confined space. The innovative design and simple operation makes it easy for the operator to handle. It can cater to different site applications such as drainage maintenance and marshland.

With the user-friendly and mobile functions, the FAV Excavator Mounted Hydraulic Vibratory Hammer can give the optimum performance under the most demanding site condition. The unique features also allows it to work in construction site with close proximity to residential area or confined space with minimum disturbance to the surrounding environment. In addition, the parts are carefully selected to ensure it's reliability and optimum performance. FAV Excavator Mounted Hydraulic Vibratory Hammer is the best choice for foundation contractors.

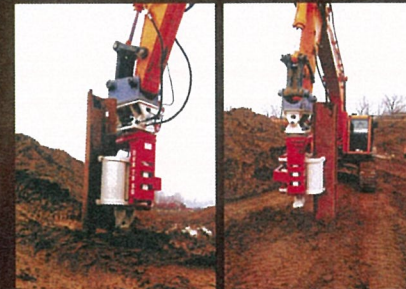
Model		SFV 250	SFV 350	SFV 450
Frequency(Max)	rpm	3,000	3,500	4,500
Weight	kg	1,500	2,800	3,500
Operating Pressure	bar	280	325	350
Vibratory Force	tons	20.5	45	60
Max. Pile Length	m	9	16	18
Suitable carrier	tons	18 - 25	40 - 50	40 - 65

*All technical data are indicative and subject to change without notice.



VIBRATORY HAMMERS

FAV 60SG & FAV 70SG Excavator Mounted Side Grip Vibratory Hammers



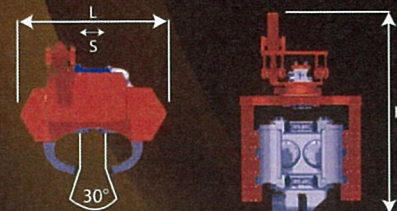
- Simple
- Versatile

- Quick Hitch & Quick Dis-connect

Technical Specifications

Model	60SG	70SG
Eccentric Moment (kgm)	6.3	7.4
Centrifugal Force (kN)	440	515
Centrifugal Force (kN) Max.	530	620
Frequency (rpm)	2500	2500
Frequency (rpm) Max.	2750	2750
Oil Flow (l/min)	200	225
Oil Flow (l/min) Max.	220	250
Power (kW)	120	135
Power (kW) Max.	130	145
Amplitude (mm)	9.2	10
Pulling Force (kN)	180	180
Gripping Force (kN)	500	500

SHEET PILE ARMS



Technical Specifications

Model	60SG	70SG
Dynamic weight Without Clamp (kg)	1380	1325
Total Weight Without Clamp (kg)	2520	2145
Length/L (mm)	1380	1380
Height/H (mm)	2200	2200
Width/W (mm)	1200	950
Arm Strokes/S (mm)	250	250
Clamp Types for Sheet Piles	SCN 60	SCN60/75
Clamping Force (kN)	645	645/815
Weight (kg)	340	340-435
Recommended Excavator Working /weight (ton)	30-35	35-40

CASSION (PIPE) ARMS



Technical Specifications

Diameter	Ø500	Ø400	Ø300	Ø200
Width/W (mm)	1275	1270	1270	1270
Amplitude (mm)	9	8.75	8.6	8.5
Dynamic Weight Without Clamp (kg)	1400	1450	1480	1490
Total Weight Without Clamp (kg)	2540	2500	2620	2630

*All technical data are indicative and subject to change without notice.